

## R-BOX 190



PG16

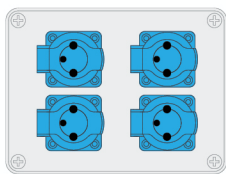
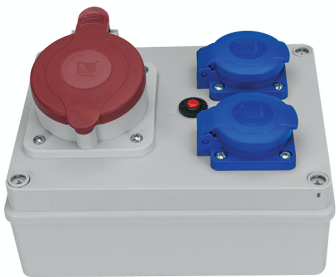
ABS

IP44

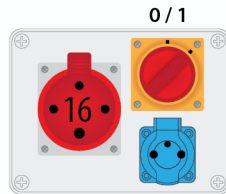


1

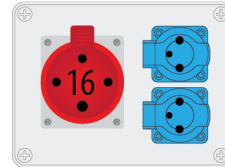
PN-EN 61439-1, PN-EN 61439-3



B.1203



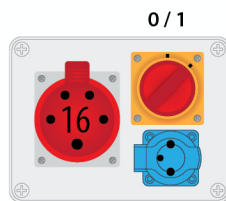
B.1210W



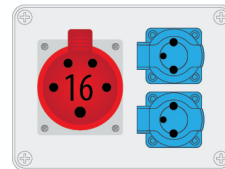
B.1227



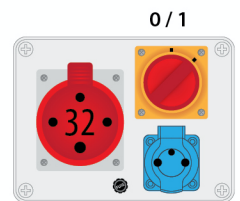
B.1224



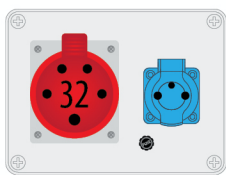
B.1093W



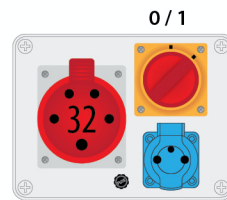
B.1602



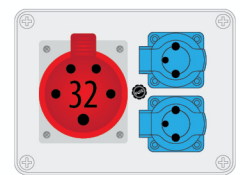
B.1207W



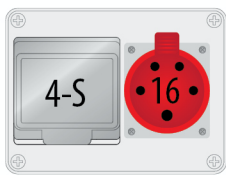
B.1215



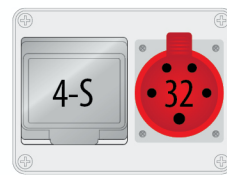
B.1092-W



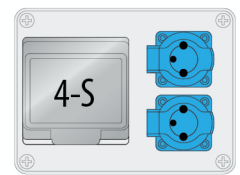
B.1603



B.18.190-1



B.18.190-2



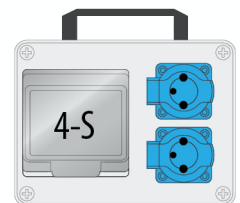
B.18.190-3



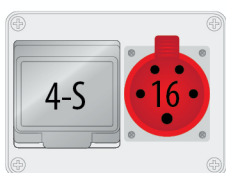
B.18.190-1R



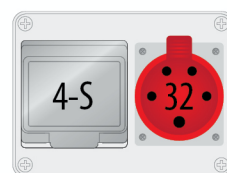
B.18.190-2R



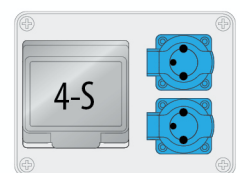
B.18.190-3R



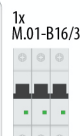
B.18.190-1Z



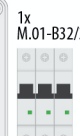
B.18.190-2Z



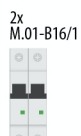
B.18.190-3Z



1x M.01-B16/3



1x M.01-B32/3



2x M.01-B16/1

Distribution box R-BOX Series  
- appropriate PG cable gland inside

