



# CorePro LED PLC 4P



## CorePro LED PLC 6.5W 840 4P G24q-2

The CorePro LED PLC 4P integrates a LED light source into a traditional fluorescent form factor. This product is the ideal solution for uplamping in general lighting applications: it meets basic lighting requirements, offers significant energy savings, and is environmentally friendly.

### Product data

General Information	
Cap-Base	G24q-2
Nominal lifetime	30,000 hour(s)
Switching Cycle	50,000
Lighting Technology	LED
Flux measurement reference	Sphere
Light Technical	
Color Code	840 [CCT of 4000K]
Beam Angle (Nom)	120 degree(s)
Luminous Flux	700 lm
Luminous Efficacy (rated) (Nom)	92.31 lm/W
Color Designation	Cool White (CW)
Correlated Color Temperature (Nom)	4000 K
Color Consistency	<6
Color rendering index (CRI)	83
LLMF At End Of Nominal Lifetime (Nom)	70 %
Photobiological safety according to EN 62471	RG0
Operating and Electrical	
Line Frequency	30000-80000 Hz
Input Frequency	30000-80000 Hz
Power Consumption	6.5 W

Lamp Current (Max)	300 mA
Lamp Current (Min)	150 mA
Starting Time (Nom)	0.5 s
Warm-up time to 60% light	0.5 s
Power Factor (Fraction)	0.9
Voltage (Nom)	20-50 V
LED alternative to fluorescent lamp power	18 W
Inrush current at mains	-
Max. lamp no. on MCB B type 10A - Mains	-
Max. lamp no. on MCB B type 10A – EM ballast without Compensation Capacitor.	-
Max. lamp no. on MCB B type 10A – EM ballast with Compensation Capacitor.	-
Max. lamp no. on MCB B type 16A - Mains	-
Max. lamp no. on MCB B type 16A – EM ballast without Compensation Capacitor.	-
Max. lamp no. on MCB B type 16A – EM ballast with Compensation Capacitor.	-
Ballast Compatibility	HF

Temperature	
Ambient temperature range	-20 °C to 35 °C

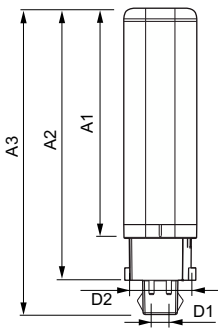
# CorePro LED PLC 4P

T-Case Maximum (Nom)	66 °C
<b>Controls and Dimming</b>	
Dimmable	No
<b>Mechanical and Housing</b>	
Product Length	100 mm
Bulb Shape	PL-C
<b>Approval and Application</b>	
Energy Efficiency Class	F
Energy Saving Product	Yes
Approval Marks	RoHS compliance
Energy Consumption kWh/1000 h	7 kWh
EPREL Registration Number	403553
CE mark	Yes
EU RoHS compliant	Yes

## Product Data

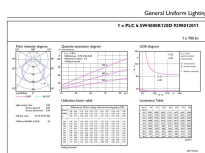
Order product name	CorePro LED PLC 6.5W 840 4P G24q-2
Full product name	CorePro LED PLC 6.5W 840 4P G24q-2
Full product code	871869654121000
Order code	929001201102
Material Nr. (12NC)	929001201102
Numerator - Quantity Per Pack	1
Net Weight (Piece)	0.078 kg
EAN/UPC - Product/Case	8718696541210
Numerator - Packs per outer box	10
EAN/UPC - Case	8718696541227

## Dimensional drawing

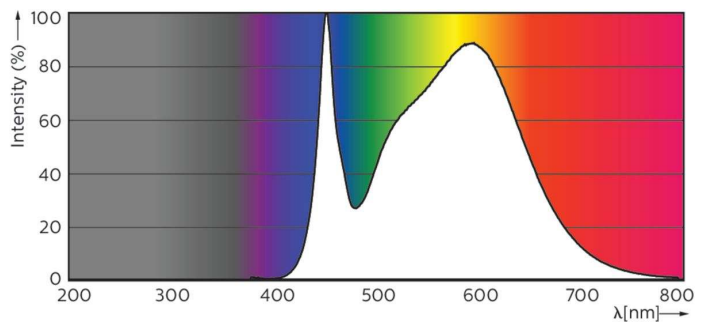


Product	D1	D2	A1	A2	A3
CorePro LED PLC 6.5W 840 4P G24q-2	24.3 mm	28.4 mm	105.8 mm	125 mm	140.6 mm

## Photometric data



OSRAM PROSPECTUS | PHOTOGRAPHY | Page 11

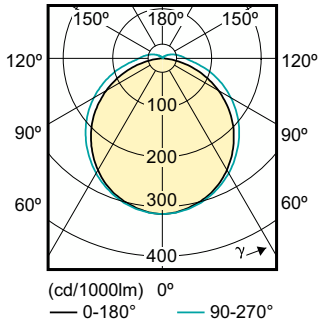


General uniform lighting - CorePro LED PLC 6.5W 840 4P G24q-2

Spectral Power Distribution Colour - CorePro LED PLC 6.5W 840 4P G24q-2

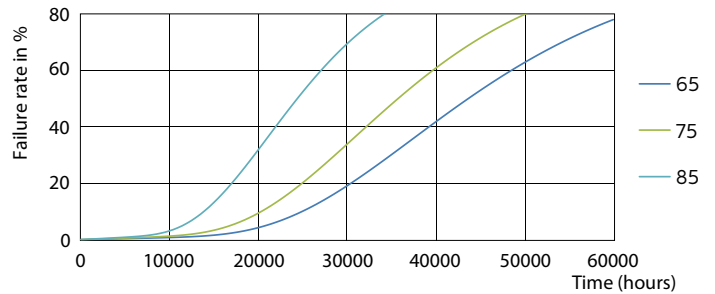
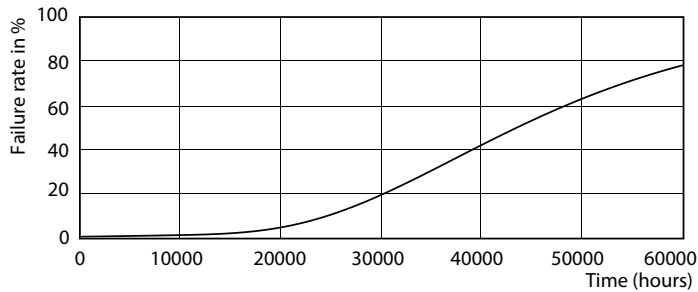
# CorePro LED PLC 4P

## Photometric data



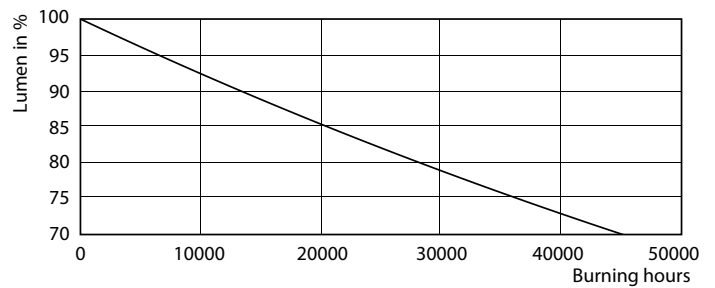
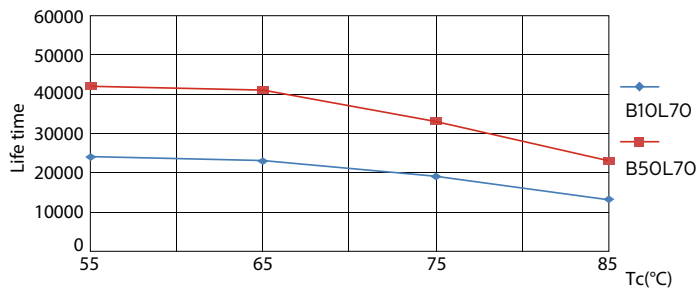
Light Distribution Diagram - CorePro LED PLC 6.5W 840 4P G24q-2

## Lifetime



LEDtube PLC 100mm 7W G24Q-2 830 650lm

LEDtube PLC 100mm 7W G24Q-2 830 650lm

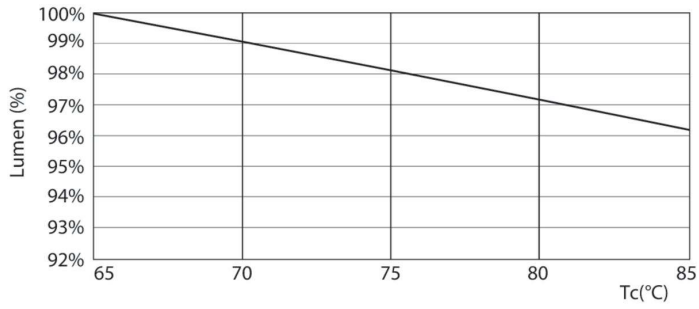


LEDtube PLC 100mm 7W G24Q-2 830 650lm

Lumen Maintenance Diagram - CorePro LED PLC 6.5W 840 4P G24q-2

# CorePro LED PLC 4P

## Lifetime



Lumen Maintenance Diagram - CorePro LED PLC 6.5W 840 4P G24q-2

